

# Technical Data Sheet

## optibelt ALPHA LINEAR/V F3 groove free - ST

PU Flat Belt, Optionally with Fabric PAR,  
Open-Ended / Endless Joined

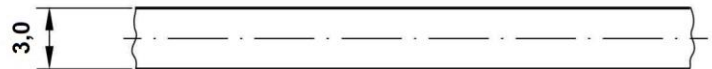


### Dimensions, Tolerances

Profile:	F3
Total thickness:	3.0 mm
Width tolerance:	±0.5 mm
Thickness tolerance:	±0.2 mm

### Construction

Polyurethane:	Thermoplastic, 92 Shore A, white
Tension cord:	Steel, Ø 1.2 mm
Fabric, optional:	Polyamide, one-sided (PAR), green

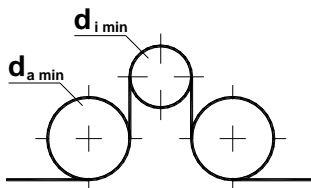


### Cord-Zugkräfte, Mindestlänge, Riemengewicht

Riemenbreite <sup>1</sup> b [mm]	15	25	30	40	50	75	100
F <sub>Br</sub> [N], ALPHA LINEAR	10360	19000	22480	32240	43240	67440	89960
F <sub>zul</sub> [N] <sup>2</sup> , ALPHA LINEAR, ε <sub>zul</sub> =0,55%	2590	4750	5620	8210	10810	16860	22490
F <sub>zul</sub> [N] <sup>2</sup> , ALPHA V	1295	2375	2810	4105	5405	8430	11245
Minimum length ALPHA V [mm]	-	700	-	-	900	900	900
Weight per meter [kg/m]	0.099	0.165	0.198	0.264	0.330	0.495	0.660

<sup>1</sup> Kleinere und Zwischenbreiten möglich <sup>2</sup> Zulässige Zugkraft F<sub>zul</sub> = 25% / 12.5% (ALPHA LINEAR / V) der Bruchkraft F<sub>Br</sub> der Corde  $c_{spez} = F_{zul} / \epsilon_{zul}$

### Inside and outside idlers



Minimum diameter of a plane inside idler:  $d_{i \min} = 120 \text{ mm}$

Minimum diameter of a plane outside idler:  $d_{a \min} = 150 \text{ mm}$