

# Technical Data Sheet

## optibelt ALPHA LINEAR/V F2.5 groove free - ST

PU Flat Belt, Optionally with Fabric PAR,  
Open-Ended / Endless Joined

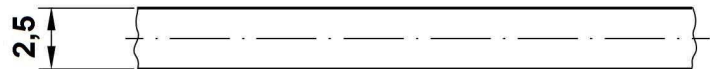


### Dimensions, Tolerances

Profile:	F2.5
Total thickness:	2.5 mm
Width tolerance:	±0.5 mm
Thickness tolerance:	±0.2 mm

### Construction

Polyurethane:	Thermoplastic, 92 Shore A, white
Tension cord:	Steel, Ø 1.2 mm
Fabric, optional:	Polyamide, one-sided (PAR), green

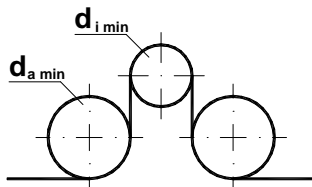


### Cord tensile force, minimum belt length, belt weight

Belt width <sup>1</sup> b [mm]	15	25	30	40	50	75	100
F <sub>Br</sub> [N], ALPHA LINEAR	10360	19000	22480	32840	43240	67440	89960
F <sub>zul</sub> [N] <sup>2</sup> , ALPHA LINEAR, ε <sub>zul</sub> =0.51%	2590	4750	5620	8210	10810	16860	22490
F <sub>zul</sub> [N] <sup>2</sup> , ALPHA V	1295	2375	2810	4105	5405	8430	11245
Minimum length ALPHA V [mm]	-	700	-	-	900	900	900
Weight per meter [kg/m]	0.086	0.143	0.171	0.228	0.285	0.428	0.570

<sup>1</sup> Smaller and intermediate widths possible <sup>2</sup> Allowable tensile force F<sub>zul</sub> = 25% / 12.5% (ALPHA LINEAR / V) of cord breaking strength F<sub>Br</sub> C<sub>spez</sub> = F<sub>zul</sub> / ε<sub>zul</sub>

### Inside and outside idlers



Minimum diameter of a plane inside idler:  $d_{i \min} = 100 \text{ mm}$

Minimum diameter of a plane outside idler:  $d_{a \min} = 120 \text{ mm}$