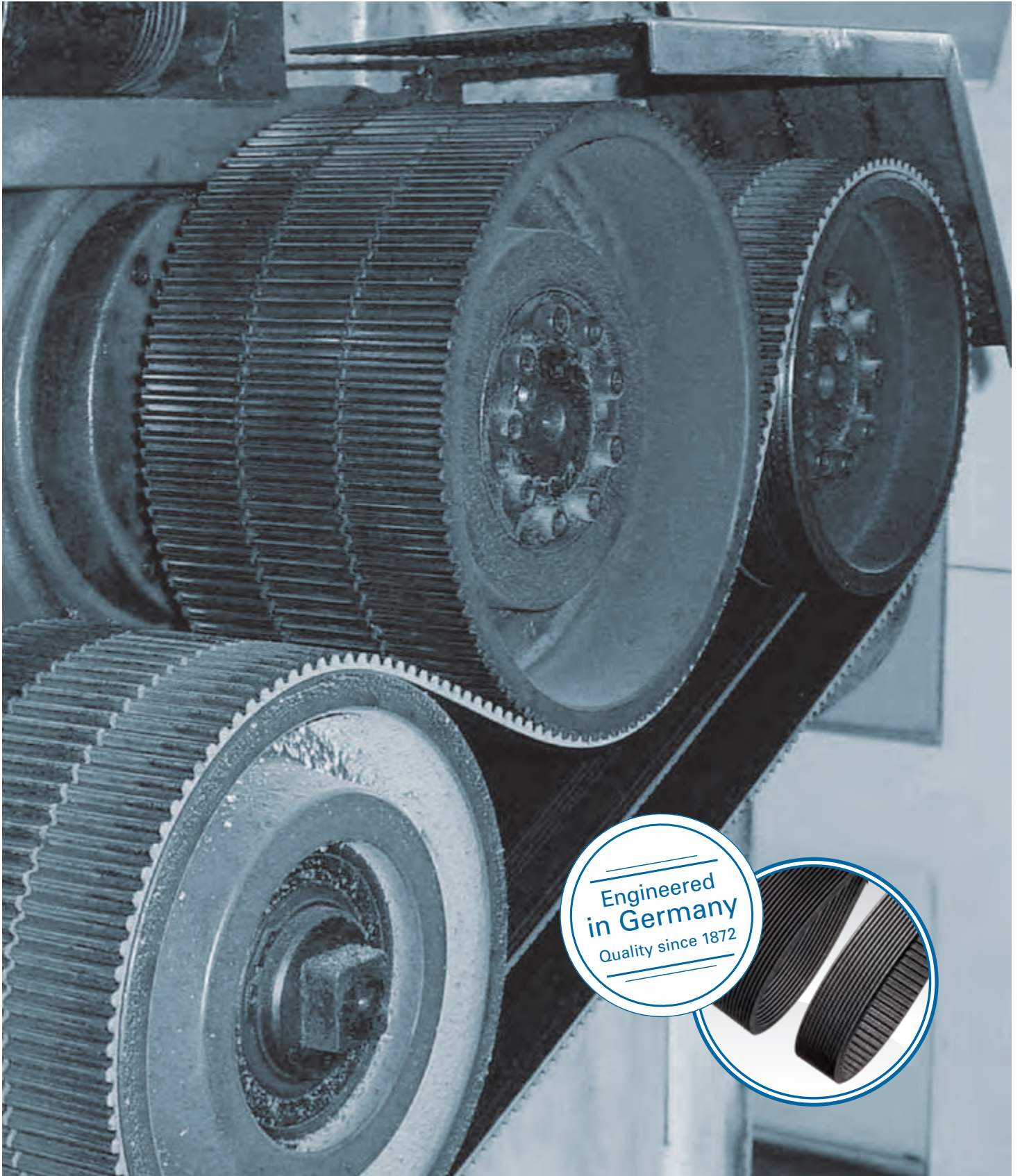




POWER TRANSMISSION
optibelt OMEGA RB



Engineered
in Germany
Quality since 1872



optibelt OMEGA RB

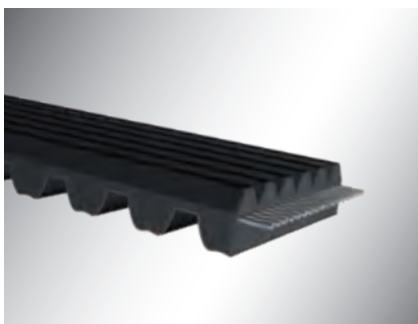
TIMING BELT



The additional PK ribbed belt profile of the **optibelt OMEGA RB** backside allows the belt to slip when the drive becomes jammed and stops suddenly. The Optibelt drive belt will protect the valuable drive components and allow the drive to restart once the blockage is removed.

APPLICATIONS

The **optibelt OMEGA RB** timing belt is used in food, corn, fruit and flour mills.



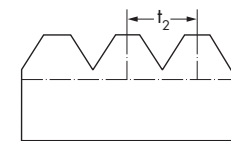
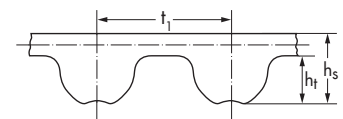
ADVANTAGES

- Rubber compound filled with aramid fibers
- Available tension cords: aramid cord, glass cord
- Antistatic according to ISO 9563
- Wear resistant: improved maintenance intervals
- RB section profile is ground into the belt's top surface for improved durability

PROFILES

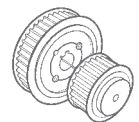
8M/14M with PK surface

optibelt OMEGA RB in cross section



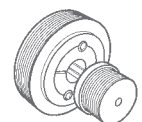
TIMING BELT PULLEYS

optibelt OMEGA timing belts run in standard HTD and RPP pulleys



RIBBED BELT PULLEYS

Standard range, special pulleys on request



MILL DRIVES

OMEGA RB	
NOMINAL LENGTH [MM]	PROFILE
1480	S8M
1552	S8M
1760	S8M
1552	8M
1696	8M
1760	8M
1800	8M
2248	8M
2272	8M
2400	8M
2800	8M
1610	14M
1778	14M
2100	14M

COMMON NUMBER OF RIBS WITH PK PROFILE	
NUMBER OF RIBS	
8	
12	
16	
22	
28	
29	
30	
32	
36	
38	



RIBBED BELT, DOUBLE-SIDED	
NOMINAL LENGTH [MM]	PROFILE
1558	DPL
1764	DPL
1965	DPL

COMMON NUMBER OF RIBS WITH PL PROFILE	
NUMBER OF RIBS	
22	
24	
23	

Further dimensions on request

DIMENSIONS					
PROFILE		S8M / PK	8M / PK	14 M / PK	DPL
Pitch	(t ₁) [mm]	8.00	8.00	14.00	
Total height	(h ₁) [mm]	3.05	3.20	5.60	
Rib spacing	(t ₂) [mm]	3.56	3.56	3.56	4.70
Total thickness	(h ₃) [mm]	7.50	7.80	11.50	11.90

Optibelt GmbH

Corveyer Allee 15
37671 Hörter
GERMANY

T +49 5271 621
F +49 5271 976200
E info@optibelt.com



www.optibelt.com