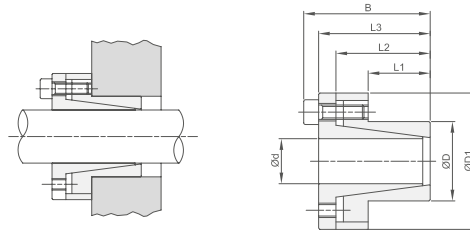


Description	d x D (mm)	L <sub>1</sub> (mm)	L <sub>2</sub> (mm)	B (mm)	Trans-withtable torque Mt (Nm)	Axial force F ax. (kN)	Screws - description	Screws - number of	Pressure. shaft P <sub>w</sub> (N/mm <sup>2</sup> )	Pressure. hub P <sub>N</sub> (N/mm <sup>2</sup> )	Screws - tightening torque Ms (Nm)	Weight (kg)
<b>CE01</b>												
CE01 19	19x47	17	20	26	298	31	M6x18	8	286	116	14.9	0.25
CE01 20	20x47	17	20	26	313	31	M6x18	8	272	116	14.9	0.24
CE01 22	22x47	17	20	26	345	31	M6x18	8	247	116	14.9	0.23
CE01 24	24x50	17	20	26	424	35	M6x18	8	255	123	14.9	0.26
CE01 25	25x50	17	20	26	441	35	M6x18	8	245	123	14.9	0.25
CE01 28	28x55	17	20	26	549	39	M6x18	12	243	124	14.9	0.30
CE01 30	30x55	17	20	26	588	39	M6x18	12	227	124	14.9	0.29
CE01 32	32x60	17	20	26	752	47	M6x18	12	255	136	14.9	0.30
CE01 35	35x60	17	20	26	822	47	M6x18	12	233	136	14.9	0.32
CE01 38	38x65	17	20	26	1042	55	M6x18	15	250	146	14.9	0.36
CE01 40	40x65	17	20	26	1097	55	M6x18	15	238	146	14.9	0.34
CE01 42	42x75	20	24	32	1740	83	M8x22	12	291	163	35	0.48
CE01 45	45x75	20	24	32	1864	83	M8x22	12	271	163	35	0.57
CE01 48	48x80	20	24	32	1988	83	M8x22	12	254	153	35	0.59
CE01 50	50x80	20	24	32	2071	83	M8x22	12	244	153	35	0.60
CE01 55	55x85	20	24	32	2658	97	M8x22	15	259	168	35	0.63
CE01 60	60x90	20	24	32	2900	97	M8x22	15	238	158	35	0.69
CE01 65	65x95	20	24	32	3587	110	M8x22	15	250	171	35	0.73
CE01 70	70x110	24	28	38	5345	153	M10x25	15	268	171	69	1.26
CE01 75	75x115	24	28	38	5727	153	M10x25	15	250	163	69	1.33
CE01 80	80x120	24	28	38	6108	153	M10x25	15	235	156	69	1.40
CE01 85	85x125	24	28	38	7417	175	M10x25	15	252	172	69	1.49
CE01 90	90x130	24	28	38	7854	175	M10x25	15	238	165	69	1.53
CE01 95	95x135	24	28	38	9326	196	M10x25	18	254	179	69	1.62
CE01 100	100x145	26	33	45	11362	227	M12x30	15	258	178	123.3	2.01
CE01 110	110x155	26	33	45	12498	227	M12x30	15	234	166	123.3	2.15
CE01 120	120x165	26	33	45	15578	260	M12x30	16	245	178	123.3	2.35
CE01 130	130x180	34	38	50	21095	325	M12x35	20	217	156	123.3	3.51
CE01 140	140x190	34	38	50	24993	357	M12x35	22	221	163	123.3	3.85
CE01 150	150x200	34	38	50	29217	390	M12x35	24	225	169	123.3	4.07
CE01 160	160x210	34	38	50	33756	422	M12x35	26	229	174	123.3	4.30
CE01 170	170x225	38	44	58	39483	465	M14x40	22	212	160	187	5.80
CE01 180	180x235	38	44	58	45606	507	M14x40	24	218	167	187	6.00
CE01 190	190x250	46	52	66	56163	591	M14x45	28	199	152	187	8.50
CE01 200	200x260	46	52	66	63342	633	M14x45	30	203	156	187	8.60
CE01 220	220x285	50	56	72	81960	745	M16x50	26	200	154	290	11.00
CE01 240	240x305	50	56	72	103162	860	M16x50	30	211	166	290	12.00
CE01 260	260x325	50	56	72	126669	974	M16x50	34	221	177	290	13.00
CE01 280	280x355	60	66	84	157339	1124	M18x60	32	197	156	400	19.00
CE01 300	300x375	60	66	84	189653	1264	M18x60	36	207	166	400	20.00
CE01 320	320x405	72	78	98	264108	1651	M20x70	36	211	167	580	30.00



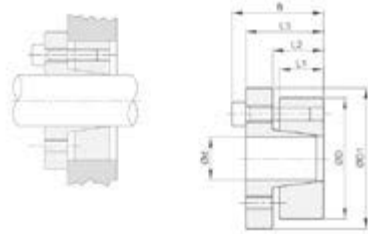
Description	d x D (mm)	L <sub>1</sub> (mm)	L <sub>2</sub> (mm)	L <sub>3</sub> (mm)	B (mm)	D <sub>1</sub> (mm)	D <sub>2</sub> (mm)	Trans-witthable torque Mt (Nm)	Axial force F ax. (KN)	Pressu-re. shaft P <sub>w</sub> (N/mm <sup>2</sup> )	Pressu-re. hub P <sub>w</sub> (N/mm <sup>2</sup> )	Screws - number of	Screws - description	Screws - tightening torque Ms (Nm)	Weight (kg)
<b>CE02</b>															
CE02 08	8x15	12	21	24	28	28	32	39	10	299	159	4	M4x10	5.2	0.16
CE02 09	9x16	14	23	27	31	28	32	44	10	227	128	4	M4x12	5.2	0.16
CE02 10	10x16	14	23	27	31	28	32	49	10	205	128	4	M4x12	5.2	0.17
CE02 11	11x18	14	23	27	31	30	34	53	10	186	114	4	M4x12	5.2	0.17
CE02 12	12x18	14	23	27	31	30	34	58	10	171	114	4	M4x12	5.2	0.18
CE02 14	14x23	14	23	27	31	35	39	68	10	146	89	4	M4x12	5.2	0.20
CE02 15	15x24	16	29	36	42	40	45	120	16	196	123	4	M6x18	17	0.21
CE02 16	16x24	16	29	36	42	40	45	128	16	184	123	4	M6x18	17	0.23
CE02 18	18x26	18	31	38	44	42	47	191	21	194	134	4	M6x18	17	0.27
CE02 19	19x27	18	31	38	44	43	48	202	21	183	129	4	M6x18	17	0.29
CE02 20	20x28	18	31	38	44	44	49	213	21	174	124	4	M6x18	17	0.30
CE02 22	22x32	25	38	45	51	48	54	234	21	114	78	4	M6x18	17	0.38
CE02 24	24x34	25	38	45	51	50	56	255	21	105	74	4	M6x18	17	0.41
CE02 25	25x34	25	38	45	51	50	56	266	21	100	74	4	M6x18	17	0.45
CE02 28	28x39	25	38	45	51	55	61	373	27	112	81	5	M6x18	17	0.47
CE02 30	30x41	25	38	45	51	57	63	480	32	126	92	6	M6x18	17	0.48
CE02 32	32x43	30	43	50	56	59	65	511	32	98	73	6	M6x18	17	0.51
CE02 35	35x47	30	43	50	56	63	69	747	43	120	89	8	M6x18	17	0.63
CE02 38	38x50	30	43	50	56	66	72	811	43	110	84	8	M6x18	17	0.67
CE02 40	40x53	32	45	52	58	69	75	959	48	110	83	9	M6x18	17	0.73
CE02 42	42x55	32	45	52	58	71	77	1007	48	105	80	9	M6x18	17	0.78
CE02 45	45x59	40	56	64	72	79	85	1781	79	130	99	8	M8x22	42	1.23
CE02 48	48x62	40	56	64	72	82	88	1900	79	122	94	8	M8x22	42	1.24
CE02 50	50x65	50	66	74	82	85	92	2473	99	117	90	10	M8x22	42	1.40
CE02 55	55x71	50	66	74	82	91	98	2721	99	106	82	10	M8x22	42	1.70
CE02 60	60x77	50	66	74	82	97	104	2968	99	97	76	10	M8x22	42	1.76
CE02 65	65x84	50	66	74	82	104	111	3215	99	90	69	10	M8x22	42	2.21
CE02 70	70x90	60	80	91	101	115	122	4430	127	89	69	8	M10x25	84	3.05
CE02 75	75x95	60	80	91	101	119	126	5338	142	93	74	9	M10x25	84	3.32
CE02 80	80x100	65	85	96	106	124	131	7595	190	108	86	12	M10x25	84	3.50
CE02 85	85x106	65	85	96	106	130	137	8069	190	101	81	12	M10x25	84	3.60
CE02 90	90x112	65	85	96	106	136	143	9968	222	112	90	14	M10x25	84	3.90
CE02 95	95x120	65	85	96	106	144	153	10522	222	106	84	14	M10x25	84	4.40
CE02 100	100x125	65	89	102	114	153	162	13651	273	124	99	12	M12x30	145	4.60
CE02 110	110x140	70	94	107	119	168	177	15016	273	105	82	12	M12x30	145	8.70
CE02 120	120x155	90	114	127	139	185	195	21844	364	99	77	16	M12x30	145	10.70
CE02 130	130x165	90	114	127	139	195	205	23664	364	92	72	16	M12x30	145	11.30
CE02 140	140x175	90	114	127	139	205	215	25485	364	85	68	16	M12x30	145	11.90
CE02 150	150x185	90	114	127	139	215	225	27305	364	80	64	16	M12x30	145	12.50



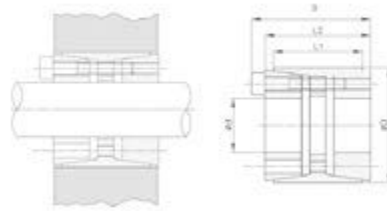








Description	d x D (mm)	L <sub>1</sub> (mm)	L <sub>2</sub> (mm)	L <sub>3</sub> (mm)	B (mm)	D <sub>1</sub> (mm)	Trans- withtable torque Mt (Nm)	Axial force F ax. (kN)	Pressure shaft P <sub>w</sub> (N/mm <sup>2</sup> )	Pressure hub P <sub>N</sub> (N/mm <sup>2</sup> )	Screws - descrip- tion	Screws - tigh- tening torque Ms (Nm)	Weight (kg)
<b>CE07</b>													
CE07 19	19x47	17	22	28	34	56	243	26	234	94	M6x20	17	0.30
CE07 20	20x47	17	22	28	34	56	256	26	222	94	M6x20	17	0.30
CE07 22	22x47	17	22	28	34	56	282	26	202	94	M6x20	17	0.30
CE07 24	24x50	17	22	28	34	59	368	31	222	106	M6x20	17	0.30
CE07 25	25x50	17	22	28	34	59	383	31	213	106	M6x20	17	0.30
CE07 28	28x55	17	22	28	34	64	429	31	190	97	M6x20	17	0.40
CE07 30	30x55	17	22	28	34	64	460	31	177	97	M6x20	17	0.40
CE07 32	32x60	17	22	28	34	69	655	41	222	118	M6x20	17	0.40
CE07 35	35x60	17	22	28	34	69	716	41	203	118	M6x20	17	0.40
CE07 38	38x65	17	22	28	34	74	778	41	187	109	M6x20	17	0.50
CE07 40	40x65	17	22	28	34	74	819	41	178	109	M6x20	17	0.50
CE07 42	42x75	20	25	33	41	84	1361	65	227	127	M8x25	41	0.80
CE07 45	45x75	20	25	33	41	84	1458	65	212	127	M8x25	41	0.70
CE07 50	50x80	20	25	33	41	84	1620	65	191	119	M8x25	41	0.80
CE07 55	55x85	20	25	33	41	94	2037	74	199	129	M8x25	41	0.90
CE07 60	60x90	20	25	33	41	99	2223	74	182	121	M8x25	41	0.90
CE07 65	65x95	20	25	33	41	104	2710	83	189	126	M8x25	41	1.00
CE07 70	70x110	24	30	40	50	119	4203	120	211	134	M10x30	83	1.90
CE07 75	75x115	24	30	40	50	124	4754	120	197	128	M10x30	83	2.00
CE07 80	80x120	24	30	40	50	129	4804	120	184	123	M10x30	83	2.00
CE07 85	85x125	24	30	40	50	134	5742	135	195	133	M10x30	83	2.00
CE07 90	90x130	24	30	40	50	139	6080	135	184	128	M10x30	83	2.20
CE07 95	95x135	24	30	40	50	144	7131	150	194	137	M10x30	83	2.30
CE07 100	100x145	26	32	44	56	154	8732	175	198	137	M12x35	145	3.00
CE07 110	110x155	26	32	44	56	164	9605	175	180	128	M12x35	145	3.20
CE07 120	120x165	26	32	44	56	174	11787	196	186	135	M12x35	145	3.40
CE07 130	130x180	34	40	52	64	189	17024	262	175	126	M12x35	145	5.20
CE07 140	140x190	34	40	54	68	199	18703	267	166	122	M14x40	230	5.40
CE07 150	150x200	34	40	54	68	209	22259	297	172	129	M14x40	230	5.70
CE07 160	160x210	34	40	54	68	219	26119	326	177	135	M14x40	230	6.00
CE07 170	170x225	44	50	64	78	234	30276	356	140	106	M14x40	230	8.30
CE07 180	180x235	44	50	64	78	244	32057	356	133	102	M14x40	230	8.80

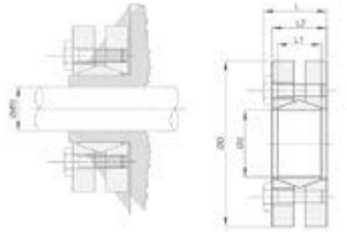


Description	d x D (mm)	L <sub>1</sub> (mm)	L <sub>2</sub> (mm)	B (mm)	Trans- withtable torque Mt (Nm)	Axial force F ax. (kN)	Pressure. shaft P <sub>w</sub> (N/mm <sup>2</sup> )	Pressure. hub P <sub>N</sub> (N/ mm <sup>2</sup> )	Screws - number of	Screws - description	Screws - tightening torque Ms (Nm)	Weight (kg)
<b>CE08</b>												
CE08 25	25x55	32	40	46	799	64	314	107	6	M6x35	17	0.50
CE08 28	28x55	32	40	46	895	64	281	107	6	M6x35	17	0.60
CE08 30	30x55	32	40	46	959	64	262	107	6	M6x35	17	0.60
CE08 35	35x60	44	54	60	1306	75	185	83	7	M6x45	17	0.70
CE08 38	38x75	44	54	62	2567	135	308	121	7	M8x50	41	0.70
CE08 40	40x75	44	54	62	2702	135	293	121	7	M8x50	41	0.70
CE08 42	42x75	44	54	62	2837	135	279	121	7	M8x50	41	1.00
CE08 45	45x75	44	54	62	3040	135	260	121	7	M8x50	41	0.90
CE08 48	48x80	56	64	62	3707	154	216	102	8	M8x55	41	1.40
CE08 50	50x80	56	64	72	3861	154	207	102	8	M8x55	41	1.30
CE08 55	55x85	56	64	72	4779	174	212	108	9	M8x55	41	1.50
CE08 60	60x90	56	64	72	5793	193	216	113	10	M8x55	41	1.60
CE08 65	65x95	56	64	72	6276	193	199	107	10	M8x55	41	1.80
CE08 70	70x110	70	78	88	10951	313	235	120	10	M10x60	83	3.00
CE08 75	75x115	70	78	88	11733	313	220	115	10	M10x60	83	3.30
CE08 80	80x120	70	78	88	13768	344	227	121	11	M10x60	83	3.50
CE08 85	85x125	70	78	88	15959	376	233	127	12	M10x60	83	3.70
CE08 90	90x130	70	78	88	16898	376	220	122	12	M10x60	83	3.80
CE08 95	95x135	70	78	88	17837	376	208	117	12	M10x60	83	5.00
CE08 100	100x145	90	100	112	25029	501	211	113	11	M12x80	145	6.00
CE08 110	110x155	90	100	112	30039	546	209	115	12	M12x80	145	6.20
CE08 120	120x165	90	100	112	38226	637	224	127	14	M12x80	145	7.20
CE08 130	130x180	104	116	130	48270	743	201	117	12	M14x90	230	10.00
CE08 140	140x190	104	116	130	60654	866	217	129	14	M14x90	230	10.20
CE08 150	150x200	104	116	130	69628	928	217	132	15	M14x90	230	10.80
CE08 160	160x210	104	116	130	79220	990	217	134	16	M14x90	230	11.50
CE08 170	170x225	134	148	164	100851	1186	206	116	14	M16x110	360	17.00
CE08 180	180x235	134	148	164	114414	1271	208	119	15	M16x110	360	17.05
CE08 190	190x250	134	148	164	128814	1356	210	119	16	M16x110	360	21.50
CE08 200	200x260	134	148	164	135594	1356	200	115	16	M16x110	360	22.00
CE08 220	220x285	134	148	164	167805	1526	204	118	18	M16x110	360	25.00









Description	$d_w$ (mm)	D (mm)	$L_1$ (mm)	$L_2$ (mm)	L (mm)	Pressure shaft $P_w$ (N/mm <sup>2</sup> )	Torque M (Nm)	Axial force F (kN)	Screws - description	Screws - number of	Screws - tightening torque $M_s$ (Nm)	Weight (kg)
<b>CE14</b>												
CE14 24	19	50	14	19.5	23	272	162	15.0	6	M5x18	4.9	0.20
	20						200	18.5				
	21						238	21.0				
CE14 30	24	60	16	21.5	25	221	285	15.7	7	M5x18	4.9	0.30
	25						323	23.7				
	26						361	26.7				
CE14 36	28	72	18	23.5	27.5	292	418	27.0	5	M6x20	11.8	0.40
	30						542	38.0				
	31						599	43.0				
CE14 44	32	80	20	25.5	29.5	301	589	44.0	7	M6x20	11.8	0.60
	35						741	49.0				
	36						817	54.0				
CE14 50	38	90	22	27.5	31.5	275	893	48.8	8	M6x25	11.8	0.80
	40						1102	58.8				
	42						1311	69.0				
CE14 55	42	100	23	30.5	34.5	239	1102	48.0	8	M6x25	11.8	1.10
	45						1444	61.7				
	48						1786	77.0				
CE14 62	48	110	23	30.5	34.5	265	1758	69.0	10	M6x25	11.8	1.30
	50						2090	80.9				
	52						2280	90.0				
CE14 68	50	115	23	30.5	34.5	242	1900	71.2	10	M6x25	11.8	1.40
	55						2375	80.9				
	60						2993	95.7				
CE14 75	55	138	25	32.5	37.8	259	2375	94.4	7	M8x30	29.4	1.70
	60						3040	111.0				
	65						3753	126.0				
CE14 80	60	145	25	32.5	37.8	243	3040	99.3	7	M8x30	29.4	1.90
	65						7505	115.0				
	70						4370	130.0				
CE14 90	65	155	30	39	44.3	257	4513	141.0	10	M8x35	29.4	3.30
	70						5700	160.0				
	75						6888	178.0				
CE14 100	70	170	34	44	49.3	245	6555	163.0	12	M8x35	29.4	4.70
	75						7125	182.0				
	80						8550	202.0				
CE14 110	75	185	39	50	56.4	232	6840	185.0	9	M10x40	57.8	5.90
	80						8550	207.0				
	85						10260	221.0				



